

## Welcome to Year 1 😊

Miss Kelly teaches Year 1 with the support of Ms Downs.

We are welcoming and happy to speak to you. Please make appointments via the school office as we are very busy in the mornings. Obviously, if it is urgent let us know quickly first thing.

### Important timetable information:

Mon - Music      Tues/Friday -PE      Wed - Forest School

Fri - Show & Tell (Groups will be set up as not everyone can do this at the same time and you will be informed when it is your child's turn.

**Equipment:** Children will need the same equipment as last year. Wellies, coat, FS uniform, PE kit, water bottle and snack pot, and book bag. Please label EVERYTHING!

**Routines:** You will enter on to the bottom playground. This is where our classroom door is so you will leave your child to be collected by the teacher here and you will also pick them up at the end of the day here. Lunchtime is from 12-1pm each day and they are welcome to bring their own packed lunch or have a school lunch. School starts at 8:45am and finishes at: 3:15pm.

p1

What are these things? Write the letters on each line.



\_\_\_\_\_



\_\_\_\_\_



\_\_\_\_\_



\_\_\_\_\_



\_\_\_\_\_

independent

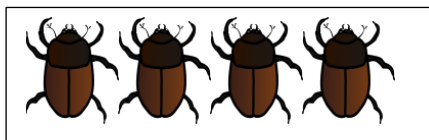
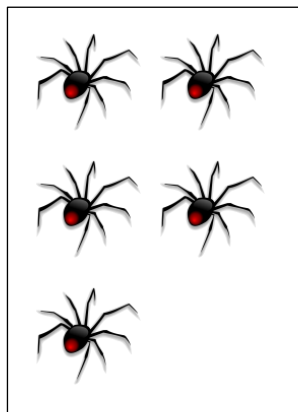
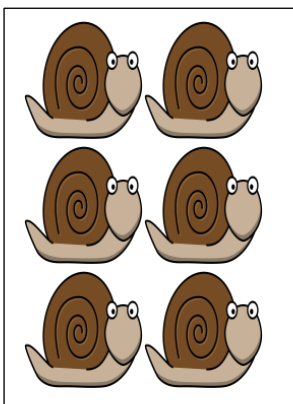
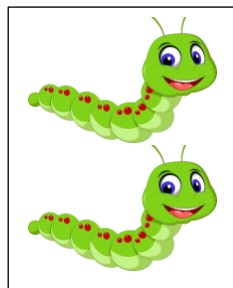
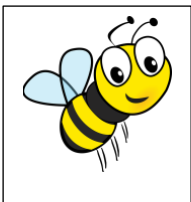
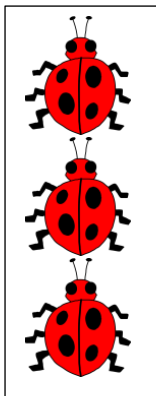
some help

p6

lots of help

## Can you count these bugs?

Write the number next to the box.



independent

some help

lots of help

## Curriculum:

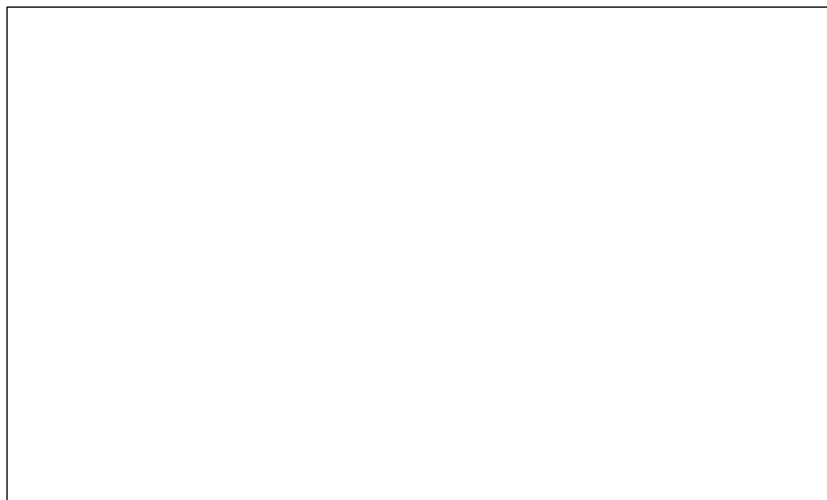
Year 1s autumn term is intended to mirror the summer term in Reception and we will do everything we can to support your child with learning the key skills needed to secure their Early Learning Goals and then engage with the basic skills taught in Year 1.

If you would like more information about the Year 1 curriculum please look at the Year 1 Curriculum Map on our school website (Classes & Curriculum), which will give you a good idea of what we will be covering each half term. Obviously, these will be adapted in the light of your child's needs as they come into Year 1. A termly booklet is also posted on the website for parents at the start of each term, letting you know the learning we have planned.

Your child's strengths and needs will have been discussed by Mrs Stamp with Miss Kelly prior to September. However, as a school, we felt it would be nice for the children to have the opportunity to let us know a little bit about themselves and demonstrate what they are able to do at the moment. This will give us another insight into how best to support them and also to get to know them. We have designed this booklet for that purpose. We hope that you and your child enjoy filling it in.

**Tell me about yourself:**

Draw a picture of you and your family



Write your name:

\_\_\_\_\_

Draw your favourite animal.



Draw your favourite food.



p3

Draw or write what you are interested in. If you can, have a go writing on your own, or you can ask Mum or Dad if they can help you...

independent



some help



lots of help



p4

## PHOTOS



Miss Kelly Mrs Downs

Bottom Playground



Y1 Classroom



Y1 Entrance



Y1 Cloakroom



Welcome to Year 1



July 2025

My name: